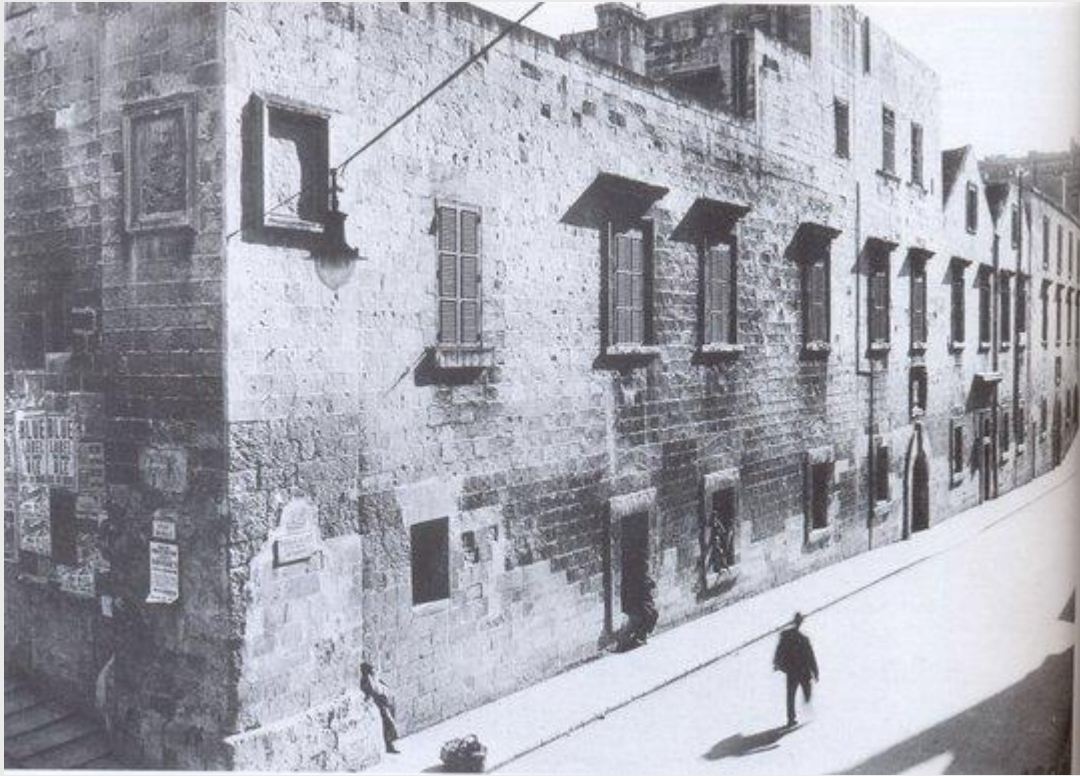


Paving works postponed



The Bakery of the Order of St John in Valletta, demolished in the 1930s.

Paving works along Melita and Strait Streets in Valletta have been postponed following the discovery of the foundations of a building dating back to the period of the Order of St. John, probably the bakery of the Order.


Transport Malta said the remains were discovered during excavation works being carried out by Enemalta as part of the paving project.

Works will resume once investigation of the remains is concluded.

See also

<http://www.timesofmalta.com/articles/view/20100317/local/trenching>

Comments

John O Scerri(1 week, 4 days ago) 

The Valletta council together with the Police should, as quickly as possible open up non parking spaces and allocate temporary parking areas along the Valletta perimeter during this period where embellishment works are being carried out and during the whole period of the Valletta project .


This will facilitate parking and encourage more people to visit the capital .

It will also help businesses and shops to continue with their activities


I was in Valletta yesterday morning and it took me too much time to find a place to park .

No....I could not go by bus this time.

Apart from this the parking areas outside Valletta were full .

Mario Tabone-Vassallo(1 week, 5 days ago) 

Hekk ahjar minn kif ghamlu ftit snin ilu, meta garrfu arsenal [ta' zmien eqdem u hafna qabel il-kavallieri] sew sew wara Sant Anglu l-Birgu, biex floku tellghu appartamenti moderni. Ahjar ukoll minn kif riedu jaghmlu bl-ewwel pjan ta' Piano [sabiha l-alliterazzjoni ridikola] meta riedu jhottu l-plieri tal-pont tal-1569

Paul Borg(1 week, 5 days ago) 

There's no rest for the wicked. We are truly living inside a one way trap. First it was CVA , then Merchant street, then South street, now strait street. A few months ago the same thing happened when works was done on the city gate bridge. Here the original foundation was discovered and laid to rest again after a few days. Take note of the findings and make sure nobody takes any of it home like the remains of the Royal Opera House. When you're done pave it as quickly as possible.

The residents are more anxious to know when the pavements are going to be fixed, let alone paving of commercial zones.